

# Public River Access

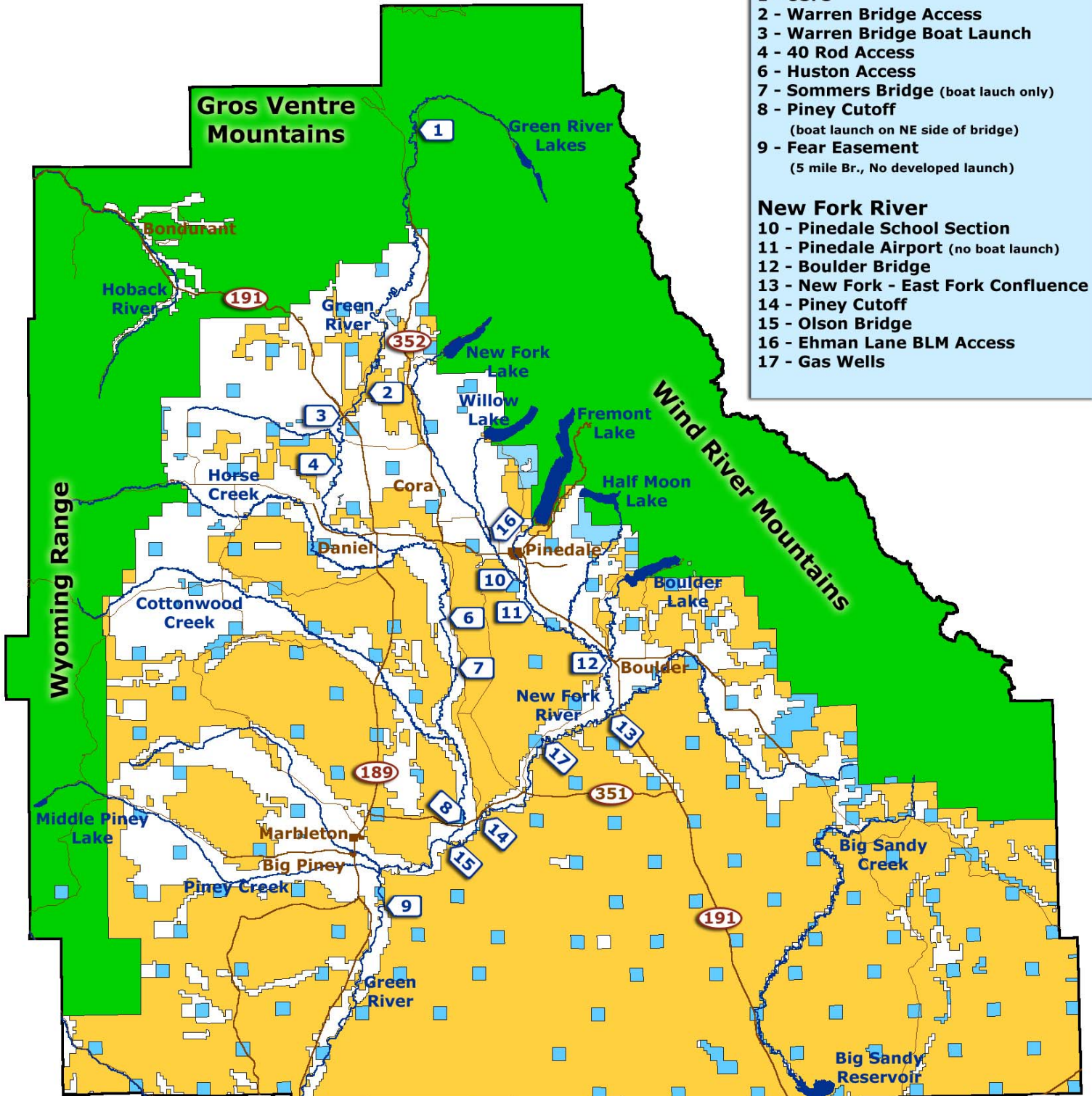
## Sublette County, Wyoming

### Green River

- 1 - USFS
- 2 - Warren Bridge Access
- 3 - Warren Bridge Boat Launch
- 4 - 40 Rod Access
- 6 - Huston Access
- 7 - Sommers Bridge (boat launch only)
- 8 - Piney Cutoff  
(boat launch on NE side of bridge)
- 9 - Fear Easement  
(5 mile Br., No developed launch)

### New Fork River

- 10 - Pinedale School Section
- 11 - Pinedale Airport (no boat launch)
- 12 - Boulder Bridge
- 13 - New Fork - East Fork Confluence
- 14 - Piney Cutoff
- 15 - Olson Bridge
- 16 - Ehman Lane BLM Access
- 17 - Gas Wells



National Forest
  State
  BLM
  Private
 © [www.VisitSubletteCounty.com](http://www.VisitSubletteCounty.com)

Sublette County Visitor's Center, 32 E. Pine St., PO Box 176, Pinedale, WY 82941  
 Toll Free 888-285-7282 Local 307-367-2242 Email: [info@visitsublettecounty.com](mailto:info@visitsublettecounty.com)