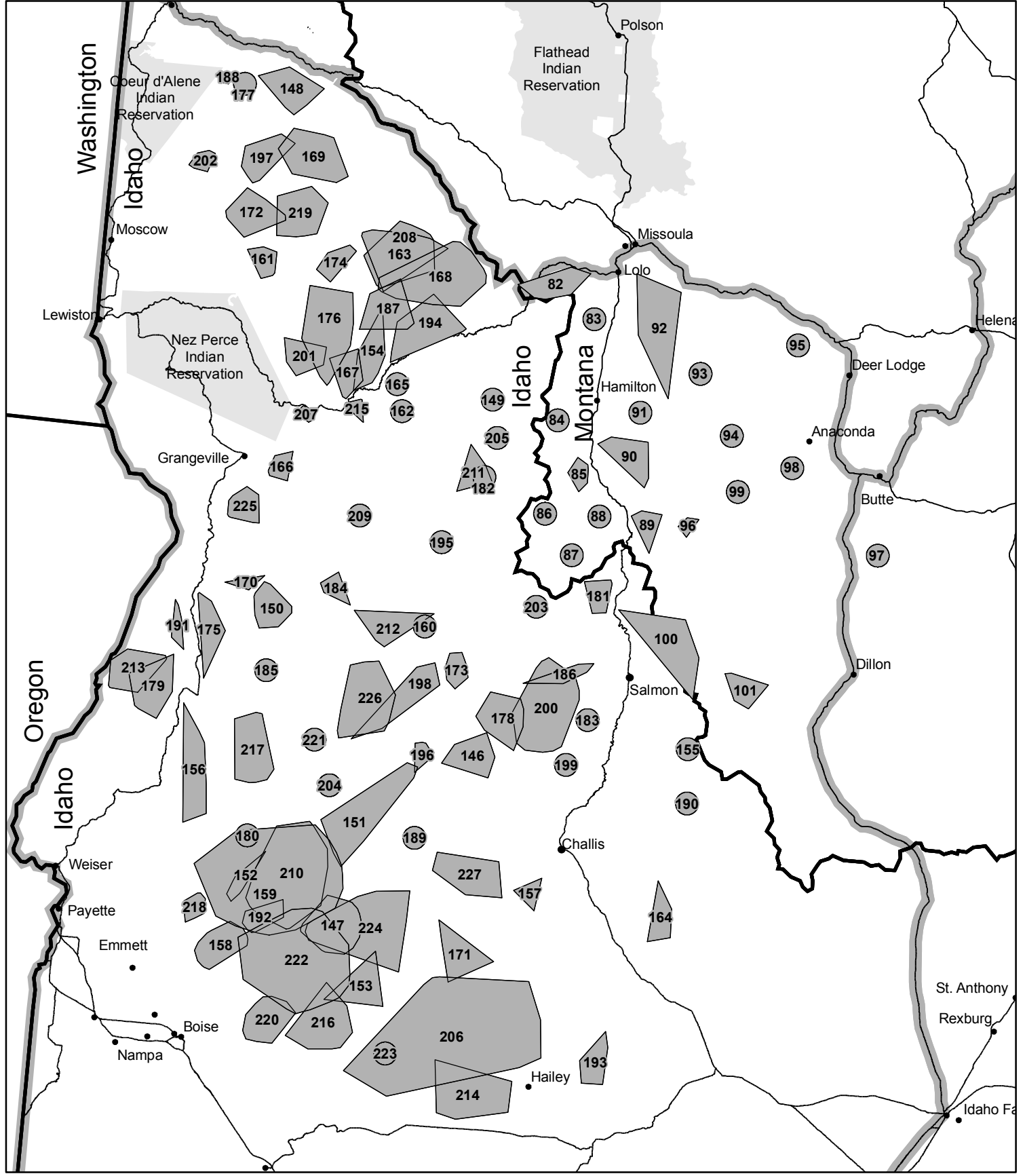
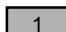




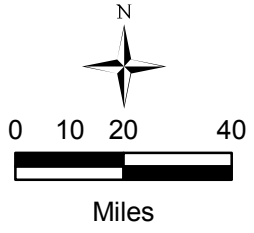


Figure 4. Central Idaho Wolf Recovery Area



-  1 Wolf Pack Distribution (See Tables)
-  Recovery Area Boundary
-  State Boundary
-  Major Highways
-  National Park Service



Data provided by Montana Fish, Wildlife and Parks; Idaho Fish & Game; Nez Perce Tribe; Wyoming Game & Fish; US Fish & Wildlife Service; National Park Service; Oregon Dept. of Fish and Wildlife; and Washington Dept. of Fish and Wildlife. All other data layers from Montana, Idaho, Wyoming, Oregon and Washington data clearinghouses.
 Montana Fish, Wildlife and Parks; 1420 E. 6th Ave. Helena, MT 59620
 AnnualProjects/WolfReport/2009 Season - 2/19/2010